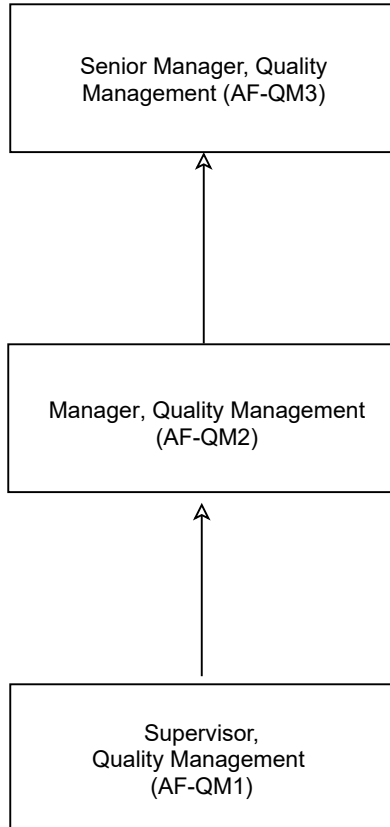


# Progression Pathway for the Logistics Industry (Airfreight and Express)

## Quality Management (QM)

---



# Quality Management

<b>Position</b>	<b>Senior Manager, Quality Management (AF-QM3)</b>		
Duties	<ul style="list-style-type: none"> <li>• Design quality policy according to market and customer requirements, and implement quality management system</li> <li>• Formulate design quality training policy</li> <li>• Perform overall quality and environmental management operations</li> </ul>		
	<b>Core Competency</b>	<b>Code</b>	<b>Credit</b>
	Formulate quality management system	LOCUQM502B	9
	Formulate environmental management system	LOCUQM503B	9
	Formulate quality management policy	LOCUQM504B	9
	Formulate policy of corporate social responsibilities	LOCUQM505B	6
	Formulate contingency procedures for environmental accidents	LOCUQM506B	9
	Formulate environmental management policy	LOCUQM509B	6
	Formulate standard for quality management system	LOCUQM510B	9
	Formulate company's performance pledge	LOCUQM511B	6
	<b>Non-core Competency</b>	<b>Code</b>	<b>Credit</b>
	Formulate measures to enhance staff's quality management culture and standard	LOCUQM508B	6
	<b>Total Credits</b>		<b>69</b>

<b>Position</b>	<b>Manager, Quality Management (AF-QM2)</b>																				
Duties	<ul style="list-style-type: none"> <li>• Implement the company’s quality policy</li> <li>• Evaluate employees’ compliance with the quality policy, report the evaluation results, and take appropriate actions</li> <li>• Propose and implement improvement plans</li> <li>• Arrange staff training and measure improvement progress</li> </ul>																				
	<table border="1"> <thead> <tr> <th>Core Competency</th> <th>Code</th> <th>Credit</th> </tr> </thead> <tbody> <tr> <td>Conduct quality management audit</td> <td>LOCUQM401B</td> <td>6</td> </tr> <tr> <td>Promote quality management culture to frontline staff</td> <td>LOCUQM402B</td> <td>6</td> </tr> <tr> <td>Handle the quality improvement suggestion of frontline staff</td> <td>LOCUQM405B</td> <td>3</td> </tr> <tr> <td>Compile quality assurance procedures</td> <td>LOCUQM403B</td> <td>6</td> </tr> <tr> <td>Manage continuous improvement systems</td> <td>LOCUOM522B</td> <td>6</td> </tr> </tbody> </table>			Core Competency	Code	Credit	Conduct quality management audit	LOCUQM401B	6	Promote quality management culture to frontline staff	LOCUQM402B	6	Handle the quality improvement suggestion of frontline staff	LOCUQM405B	3	Compile quality assurance procedures	LOCUQM403B	6	Manage continuous improvement systems	LOCUOM522B	6
	Core Competency	Code	Credit																		
	Conduct quality management audit	LOCUQM401B	6																		
	Promote quality management culture to frontline staff	LOCUQM402B	6																		
	Handle the quality improvement suggestion of frontline staff	LOCUQM405B	3																		
	Compile quality assurance procedures	LOCUQM403B	6																		
	Manage continuous improvement systems	LOCUOM522B	6																		
	<table border="1"> <thead> <tr> <th>Non-core Competency</th> <th>Code</th> <th>Credit</th> </tr> </thead> <tbody> <tr> <td>Assess environmental impacts of working procedures</td> <td>LOCUCN401B</td> <td>6</td> </tr> <tr> <td>Enhance staff’s awareness of environmental protection</td> <td>LOCUQM408B</td> <td>6</td> </tr> <tr> <td colspan="2" style="text-align: right;">Total Credits</td> <td>39</td> </tr> </tbody> </table>			Non-core Competency	Code	Credit	Assess environmental impacts of working procedures	LOCUCN401B	6	Enhance staff’s awareness of environmental protection	LOCUQM408B	6	Total Credits		39						
	Non-core Competency	Code	Credit																		
	Assess environmental impacts of working procedures	LOCUCN401B	6																		
	Enhance staff’s awareness of environmental protection	LOCUQM408B	6																		
	Total Credits		39																		

<b>Position</b>	<b>Supervisor, Quality Management (AF-QM1)</b>														
Duties	<ul style="list-style-type: none"> <li>• Implement the company's quality policy</li> <li>• Evaluate employees' compliance with the quality policy, report the evaluation results, and take appropriate actions</li> <li>• Implement quality improvement projects</li> </ul>														
	<table border="1"> <thead> <tr> <th>Core Competency</th> <th>Code</th> <th>Credit</th> </tr> </thead> <tbody> <tr> <td>Handle issues on quality of transport and logistics services</td> <td>LOCUQM301B</td> <td>6</td> </tr> <tr> <td>Implement quality management training program</td> <td>LOCUQM409B</td> <td>6</td> </tr> <tr> <td>Test and calibrate measuring equipment</td> <td>LOCUQM305B</td> <td>6</td> </tr> </tbody> </table>			Core Competency	Code	Credit	Handle issues on quality of transport and logistics services	LOCUQM301B	6	Implement quality management training program	LOCUQM409B	6	Test and calibrate measuring equipment	LOCUQM305B	6
	Core Competency	Code	Credit												
	Handle issues on quality of transport and logistics services	LOCUQM301B	6												
	Implement quality management training program	LOCUQM409B	6												
	Test and calibrate measuring equipment	LOCUQM305B	6												
	<table border="1"> <thead> <tr> <th>Non-core Competency</th> <th>Code</th> <th>Credit</th> </tr> </thead> <tbody> <tr> <td>Implement environmental management procedures</td> <td>LOCUQM303B</td> <td>6</td> </tr> <tr> <td colspan="2" style="text-align: right;">Total Credits</td> <td>24</td> </tr> </tbody> </table>			Non-core Competency	Code	Credit	Implement environmental management procedures	LOCUQM303B	6	Total Credits		24			
	Non-core Competency	Code	Credit												
	Implement environmental management procedures	LOCUQM303B	6												
Total Credits		24													